



ALFA

© ALFA

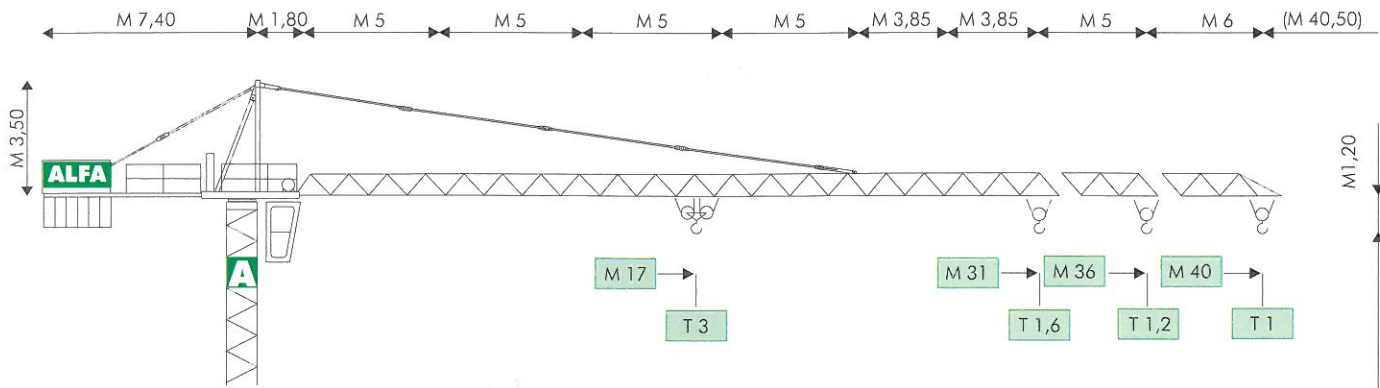
GRUPPO FINALFA



VANNI - GREVE IN CHIANTI (FI)

® CITYMATIC A557

MODELLO/TYPE A 557

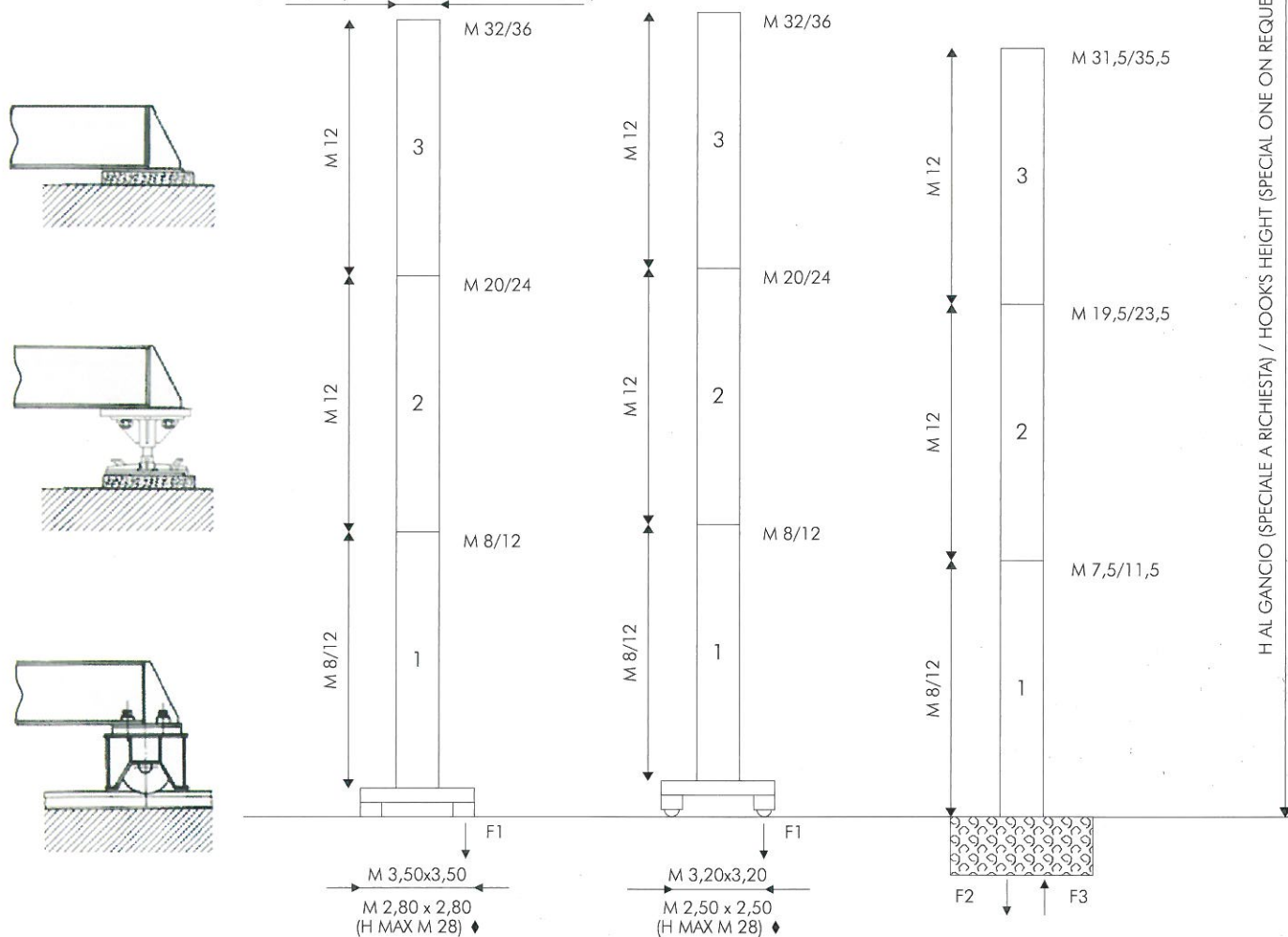


COMPOSIZIONE TORRE/TOWER SECTIONS

FISSA SUL CARRO
FIXED ON CARRIAGE
M 1,05 x 1,05 (TORRE PESANTE/HEAVY TOWER)
M 1,20 x 1,20 (TORRE LEGGERA/LIGHT TOWER) ◆

TRASLANTE
TRAVELLING

FISSA SENZA CARRO
FIXED WITHOUT CARRIAGE



● IN ESERCIZIO / IN SERVICE
■ FUORI ESERCIZIO / OUT OF SERVICE

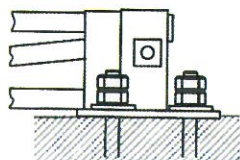
F1 ● T 35 ■ T 46

~T15

F2 ● T 54 ■ T 82

F3 ● T 41 ■ T 70

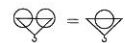
~T12,5



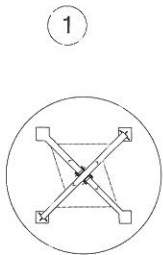
DIAGRAMMI DI CARICO/LOAD DIAGRAMS

A 557

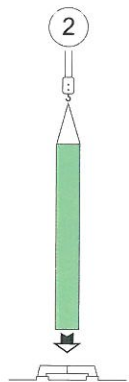
T				2	1,85	1,65	1,5	1,35	1,25	1,15	1,1	1	
M		14,5	17,5	21	22,5	25	27,5	30	32,5	35	37,5	40	M 40
T		3	2,45	2									
T					2	1,8	1,6	1,45	1,35	1,2			
M		15,5	17,5	20	22,5	25	27,5	30	32,5	36			M 36
T		3	2,6	2,3	2								
T						2	1,8	1,6					
M		17	18,5	20	22,5	25	27,5	31					M 31
T		3	2,85	2,55	2,25	2							



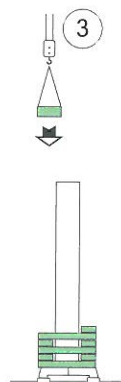
MONTAGGIO/ERECTION



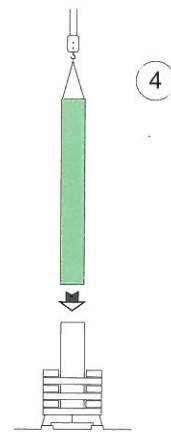
1
ASSEMBLAGGIO BASAMENTO
CARRIAGE ASSEMBLY



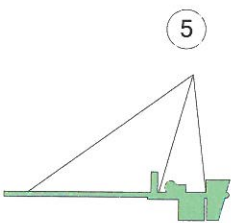
2
MONTAGGIO PRIMO ELEMENTO
FIRST MAST SECTION ASSEMBLY



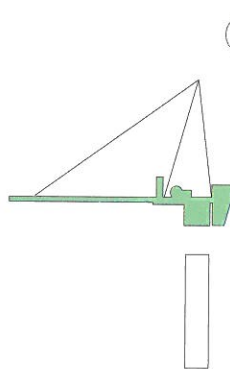
3
CARICO ZAVORRA
BALLAST LOADING



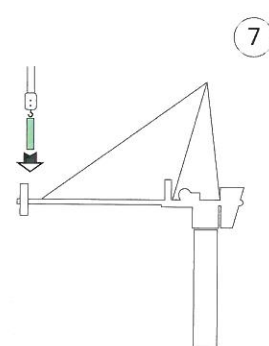
4
MONTAGGIO EVENTUALI ALTRI ELEMENTI
EVENTUAL OTHER MAST SECTIONS ASSEMBLY



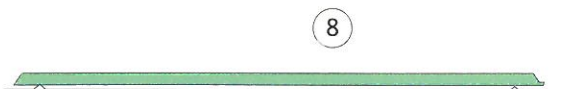
5
APPONTAMENTO ROTAZIONE E CONTROFRECCIA
SLEWING GROUP AND COUNTERJIB ASSEMBLY



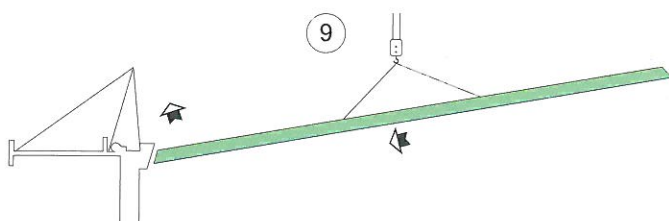
6
MONTAGGIO ROTAZIONE E CONTROFRECCIA
SLEWING GROUP AND COUNTERJIB ASSEMBLY



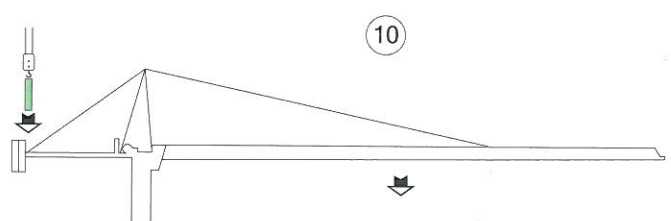
7
CARICO PARZIALE CONTRAPPESO
PARTIAL COUNTERWEIGHT LOADING



8
ASSEMBLAGGIO A TERRA FRECCIA E TIRANTI
JIB AND STAYS ASSEMBLY ON GROUND

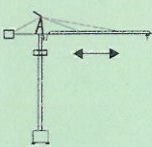
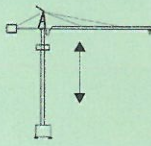


9
SOLLEVAMENTO FRECCIA E COLLEGAMENTO TIRANTI
JIB HOISTING AND STAYS CONNECTIONS



10
ALLINEAMENTO FRECCIA E COMPLETAMENTO CONTRAPPESO
JIB RELEASE AND FINAL COUNTERWEIGHT LOADING

MECCANISMI/MECHANISMS A 557

	HP	M/1'		HP	M/1'		T	
	2/3 (MRC 86)	20/40		10/10/2,5 (185 - 3VS)	I	5	2	
	3,5 ♦(SECAS III)	0 ▶ 40 (MICRO 0 - 5)			II	20	2	
	3,5 (SECAS III)	0 ▶ 0,9 (MICRO 0 - 0,1) (G/1'-REV/1')			III	40	1	
	2 x 3,5 (SECAS III)	0 ▶ 20 (MICRO 0 - 3)			♦	I	2,5	3
					II	10	3	
					III	20	2	
				♦	0 ▶ 50 5/15/25 40/50		2/2/2 1/0,75	
					0 ▶ 25 2,5/7,5/12,5 20/25		3/3/3 2/1,5	

ALIMENTAZIONE/POWER SUPPLY	V	400/50HZ	PROFILO ROTAIA/RAIL SECTION	~KG	46
ASSORBIMENTO/MAINS SUPPLY	KW	18/10♦	RADIOCOMANDO/RADIOCONTROL		
CABINA PENSILE/SLEWING CAB		♦	TIRO IN QUARTA/FOUR FALLS REEVING		♦
CONTRAPPESO/COUNTERWEIGHT	~T	10,4	ZAVORRA BASE/BASE BALLAST	~T	18▶50 ♦

dati non impegnativi e modifiche riservate / subject to modifications

a richiesta / on request ♦

CARATTERISTICHE PRINCIPALI

STRUTTURE IN ACCIAIO FE 510C A NORME DIN • ACCOPPIAMENTI SPINATI, SEDI ALESATE • PERNERIA, FUNI, PIATTAFORME, SCALE E PASSERELLE AEREE ZINCATE • RUOTISMI SU CUSCINETTI E RIDUTTORI EPICICLOIDALI IN PRESA DIRETTA • RALLA PRECARICATA E TRATTATA TERMICAMENTE, CON LUBRIFICAZIONE CENTRALIZZATA (ALFALUB) • ROTAZIONE ELETTRONICA A REGOLAZIONE CONTINUA DI VELOCITA' (SECAS III) • DISTRIBUZIONE A DUE VELOCITA', O SU RICHIESTA, A REGOLAZIONE CONTINUA DI VELOCITA' (SECAS III) • TRASLAZIONE ELETTRONICA A REGOLAZIONE CONTINUA DI VELOCITA' (SECAS III) • RUOTE DI TRASLAZIONE IN ACCIAIO FUCINATO, TRATTATE TERMICAMENTE • PIATTAFORMA GIREVOLE, CON I PRINCIPALI GRUPPI ELETTROMECCANICI A BORDO • TIRO IN QUARTA • CABINA PENSILE ROTANTE • ARMADIO ELETTRICO IN ACCIAIO INOX A NORME CEI • VERNICIATURA AD IMMERSIONE CON DOPPIA MANO DI SMALTO AL CROMO-ZINCO (DEPAS) • DISPOSITIVI DI SICUREZZA SECONDO LA DIRETTIVA MACCHINE EUROPEA "CE".

MAIN FEATURES

ST 510C STEEL STRUCTURES CONFORM TO DIN RULES • PINED CONNECTIONS, BORED SEATS • GALVANIZED PINS, ROPES, PLATFORMS, LADDERS AND FOOTPATHES • DRIVING MECHANISMS ON BEARINGS AND DIRECT DRIVE PLANETARY GEARS • PRELOADED AND HEAT TREATED SLEWING RING WITH CENTRALISED LUBRICATION (ALFALUB) • ELECTRONIC SLEWING WITH CONTINUOUS SPEED ADJUSTMENT (SECAS III) • TWO-SPEED TROLLEY WINCH OR, ON REQUEST, WITH CONTINUOUS SPEED ADJUSTMENT (SECAS III) • ELECTRONIC TRAVELLING WITH CONTINUOUS SPEED ADJUSTMENT (SECAS III) • FORGED STEEL TRAVELLING WHEELS HEAT TREATED • SLEWING PLATFORM WITH MAIN ELECTRO-MECHANICAL GROUPS ON BOARD • FOUR FALLS REEVING • SLEWING OPERATOR'S CAB • STAINLESS STEEL ELECTRICAL BOARD PANEL CONFORMS TO CEI RULES • DIPPING PAINTING WITH DOUBLE COAT OF CHROMIUM ZINC ENAMEL (DEPAS) • SAFETY DEVICES ACCORDING TO "CE" EUROPEAN MACHINE DIRECTIVE.

AGENTE/DEALER



ALFA SRL • 61015 NOVAFELTRIA (PU) • ITALY • PH. +39 0541 920096 • FAX 0541 921847
www.alfagru.it - info@alfagru.it