



ALFA

© ALFA

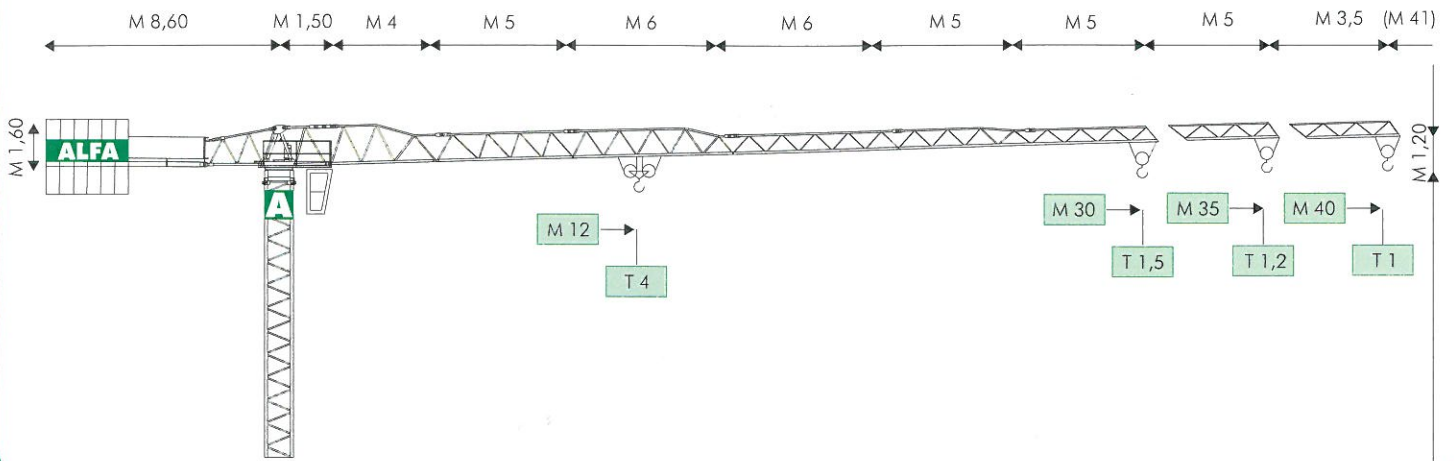
GRUPPO FINALFA



MUNARETTO (THIENE (VI))

® CITYMATIC A558

MODELLO/TYPE A 558



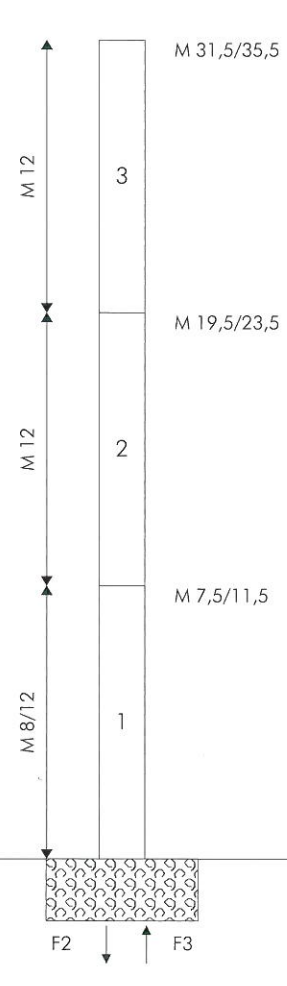
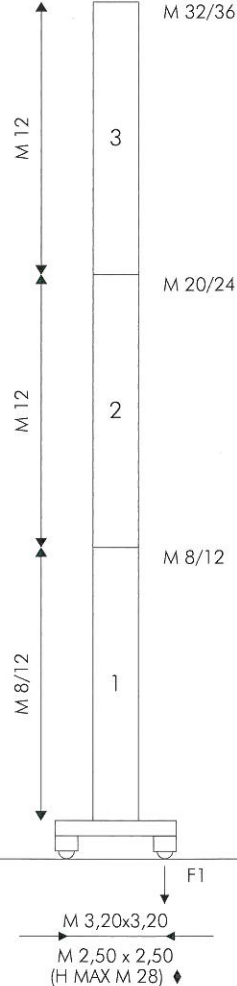
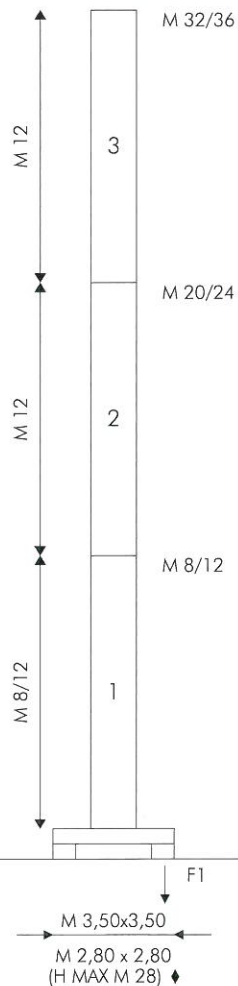
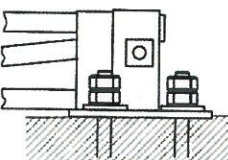
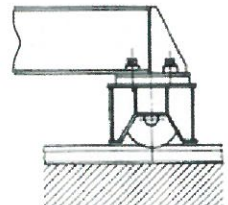
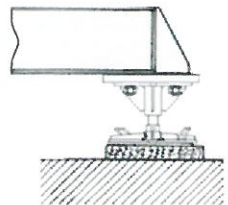
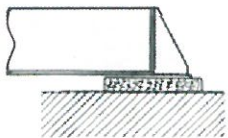
COMPOSIZIONE TORRE/TOWER SECTIONS

FISSA SUL CARRO
FIXED ON CARRIAGE

TRASLANTE
TRAVELLING

FISSA SENZA CARRO
FIXED WITHOUT CARRIAGE

M 1,05 x 1,05 (TORRE PESANTE/HEAVY TOWER)
M 1,20 x 1,20 (TORRE LEGGERA/LIGHT TOWER) ◆



H AL GANCIO (SPECIALE A RICHIESTA) / HOOKS HEIGHT (SPECIAL ONE ON REQUEST)

● IN ESERCIZIO / IN SERVICE
■ FUORI ESERCIZIO / OUT OF SERVICE

F1 ● T 36 ■ T 47

~T16

F2 ● T 53 ■ T 78

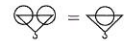
F3 ● T 39 ■ T 66

~T13,5

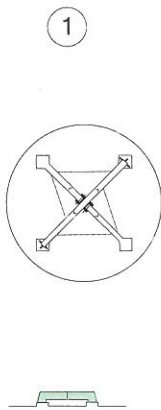
DIAGRAMMI DI CARICO/LOAD DIAGRAMS

A 558

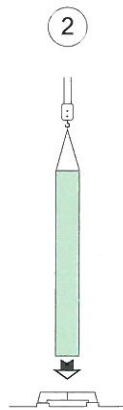
T				2	1,85	1,65	1,5	1,35	1,25	1,15	1,1	1	
M		11	15	21	22,5	25	27,5	30	32,5	35	37,5	40	M 40
T		4	3	2									
T					2	1,75	1,55	1,45	1,3	1,2			
M		11,5	15	20	22	25	27,5	30	32,5	35			M 35
T		4	3,05	2,2	2								
T						2	1,65	1,5					
M		12	15	17,5	20	23	27,5	30					M 30
T		4	3,2	2,7	2,35	2							



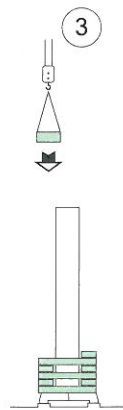
MONTAGGIO/ERECTION



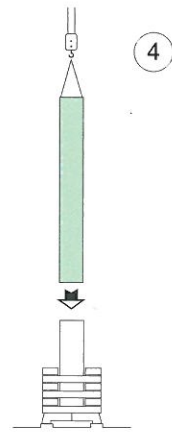
ASSEMBLAGGIO BASAMENTO
CARRIAGE ASSEMBLY



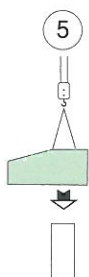
MONTAGGIO PRIMO ELEMENTO
FIRST MAST SECTION ASSEMBLY



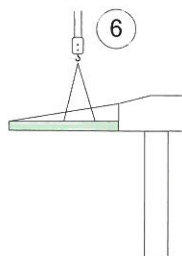
CARICO ZAVORRA
BALLAST LOADING



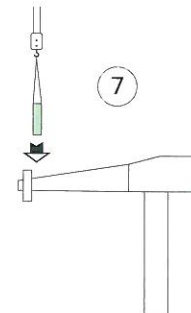
MONTAGGIO EVENTUALI ALTRI ELEMENTI
EVENTUAL OTHER MAST SECTIONS ASSEMBLY



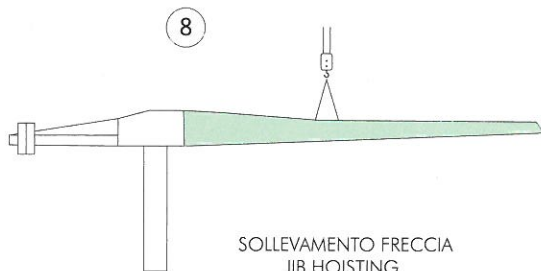
MONTAGGIO ROTAZIONE
SLEWING GROUP ASSEMBLY



MONTAGGIO CONTROFRECCIA
COUNTERJIB ASSEMBLY



CARICO PARZIALE CONTRAPPESO
PARTIAL COUNTERWEIGHT LOADING



SOLLEVAMENTO FRECCIA
JIB HOISTING



COMPLETAMENTO CONTRAPPESO
FINAL COUNTERWEIGHT LOADING

MECCANISMI/MECHANISMS A 558

	HP	M/1'		HP	M/1'		T	
		2/3 (MRC 86)		20/40		10/10/2,5 (185 - 3VS)	I	5
	3,5 ♦(SECAS III)	0 ▶ 40 (MICRO 0 - 5)	II	20			2	
	3,5 (SECAS III)	0 ▶ 0,9 (MICRO 0 - 0,1) (G/1'-REV/1')	III	40			1	
	3,5 (SECAS III)	0 ▶ 0,9 (MICRO 0 - 0,1) (G/1'-REV/1')	♦	I			2,5	4
	2 x 3,5 (SECAS III)	0 ▶ 20 (MICRO 0 - 3)	II	10			4	
	2 x 3,5 (SECAS III)	0 ▶ 20 (MICRO 0 - 3)	III	20			2	
				♦	0 ▶ 50 5/15/25 40/50		2/2/2 1/0,75	
					0 ▶ 25 2,5/7,5/12,5 20/25		4/4/4 2/1,5	

ALIMENTAZIONE/POWER SUPPLY	V	400/50HZ	PROFILO ROTAIA/RAIL SECTION	~KG	46
ASSORBIMENTO/MAINS SUPPLY	KW	18/10♦	RADIOCOMANDO/RADIOCONTROL		
CABINA PENSILE/SLEWING CAB			TIRO IN QUARTA/FOUR FALLS REEVING		♦
CONTRAPPESO/COUNTERWEIGHT	~T	10,3	ZAVORRA BASE/BASE BALLAST	~T	18 ▶ 50 ♦

dati non impegnativi e modifiche riservate / subject to modifications

a richiesta / on request ♦

CARATTERISTICHE PRINCIPALI

STRUTTURE IN ACCIAIO FE 510C A NORME DIN • ACCOPPIAMENTI SPINATI, SEDI ALESATE • PERNERIA, FUNI, PIATTAFORME, SCALE E PASSERELLE AEREE ZINCATE • RUOTISMI SU CUSCINETTI E RIDUTTORI EPICICLOIDALI IN PRESA DIRETTA • RALLA PRECARICATA E TRATTATA TERMICAMENTE, CON LUBRIFICAZIONE CENTRALIZZATA (ALFALUB) • ROTAZIONE ELETTRONICA A REGOLAZIONE CONTINUA DI VELOCITA' (SECAS III) • DISTRIBUZIONE A DUE VELOCITA', O SU RICHIESTA, A REGOLAZIONE CONTINUA DI VELOCITA' (SECAS III) • TRASLAZIONE ELETTRONICA A REGOLAZIONE CONTINUA DI VELOCITA' (SECAS III) • RUOTE DI TRASLAZIONE IN ACCIAIO FUCINATO, TRATTATE TERMICAMENTE • PIATTAFORMA GIREVOLE, CON I PRINCIPALI GRUPPI ELETTROMECCANICI A BORDO • TIRO IN QUARTA • CABINA PENSILE ROTANTE • ARMADIO ELETTRICO IN ACCIAIO INOX A NORME CEI • VERNICIATURA AD IMMERSIONE CON DOPPIA MANO DI SMALTO AL CROMO-ZINCO (DEPAS) • DISPOSITIVI DI SICUREZZA SECONDO LA DIRETTIVA MACCHINE EUROPEA "CE".

MAIN FEATURES

ST 510C STEEL STRUCTURES CONFORM TO DIN RULES • PINED CONNECTIONS, BORED SEATS • GALVANIZED PINS, ROPES, PLATFORMS, LADDERS AND FOOTPATHES • DRIVING MECHANISMS ON BEARINGS AND DIRECT DRIVE PLANETARY GEARS • PRELOADED AND HEAT TREATED SLEWING RING WITH CENTRALISED LUBRICATION (ALFALUB) • ELECTRONIC SLEWING WITH CONTINUOUS SPEED ADJUSTMENT (SECAS III) • TWO-SPEED TROLLEY WINCH OR, ON REQUEST, WITH CONTINUOUS SPEED ADJUSTMENT (SECAS III) • ELECTRONIC TRAVELLING WITH CONTINUOUS SPEED ADJUSTMENT (SECAS III) • FORGED STEEL TRAVELLING WHEELS HEAT TREATED • SLEWING PLATFORM WITH MAIN ELECTRO-MECHANICAL GROUPS ON BOARD • FOUR FALLS REEVING • SLEWING OPERATOR'S CAB • STAINLESS STEEL ELECTRICAL BOARD PANEL CONFORMS TO CEI RULES • DIPPING PAINTING WITH DOUBLE COAT OF CHROMIUM ZINC ENAMEL (DEPAS) • SAFETY DEVICES ACCORDING TO "CE" EUROPEAN MACHINE DIRECTIVE.

AGENTE/DEALER



ALFA SRL • 61015 NOVADELTRIA (PU) • ITALY • PH. +39 0541 920096 • FAX 0541 921847

www.alfagru.it - info@alfagru.it