



# ALFA

© ALFA

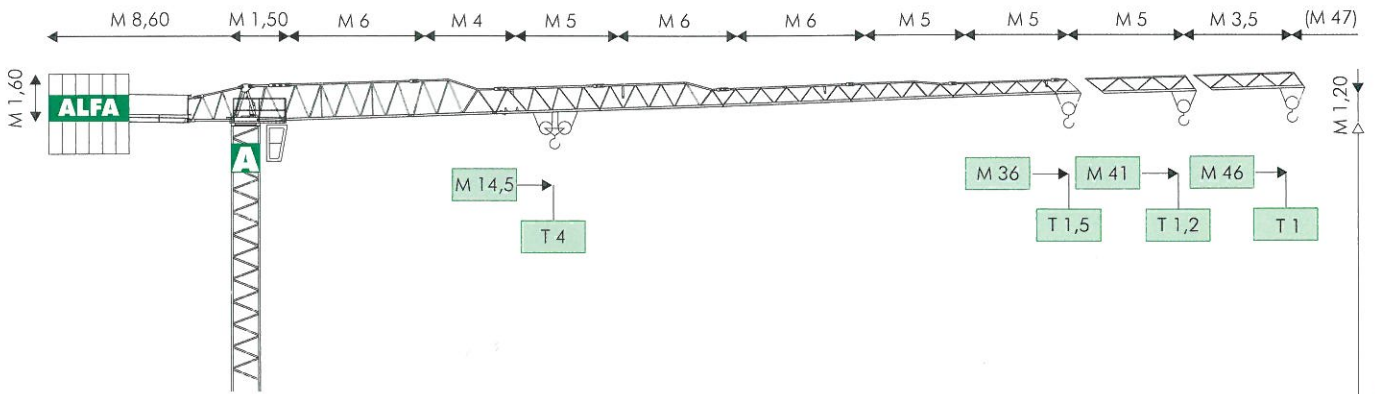
GRUPPO FINALFA



FORNONI - CHIARI (BS)

# ® CITYMATIC A663

# MODELLO/TYPE A 663



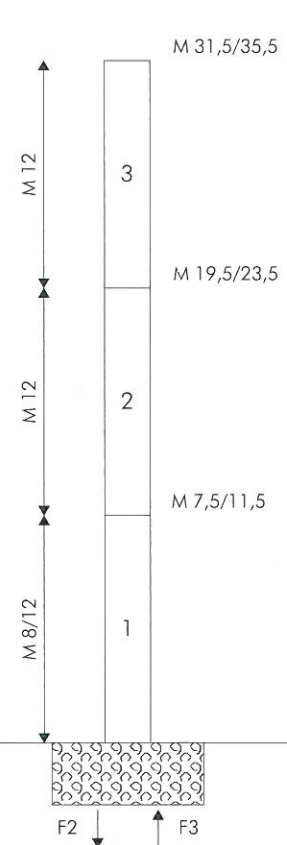
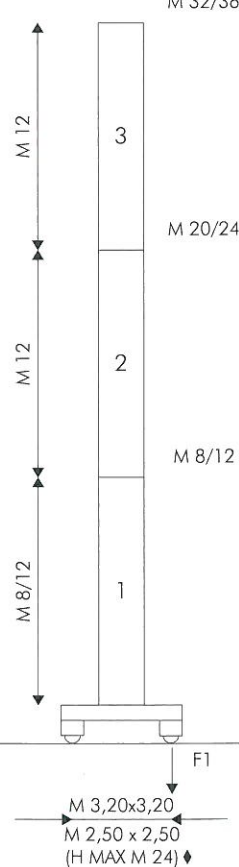
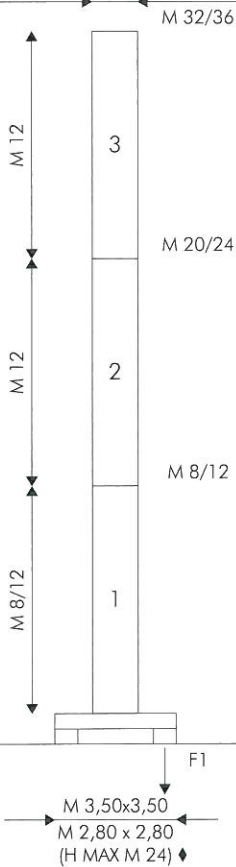
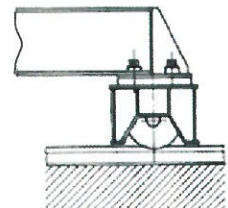
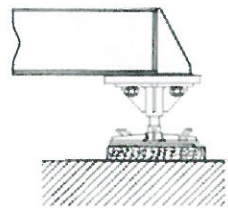
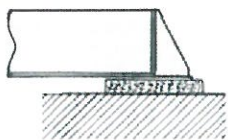
## COMPOSIZIONE TORRE/TOWER SECTIONS

FISSA SUL CARRO  
FIXED ON CARRIAGE

TRASLANTE  
TRAVELLING

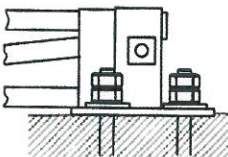
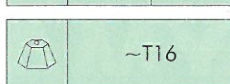
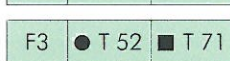
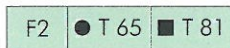
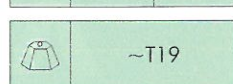
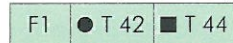
FISSA SENZA CARRO  
FIXED WITHOUT CARRIAGE

M 1,05 x 1,05 (TORRE PESANTE/HEAVY TOWER)  
M 1,20 x 1,20 (TORRE LEGGERA/LIGHT TOWER) ◆



H AL GANCIO (SPECIALE A RICHIESTA) / HOOK'S HEIGHT (SPECIAL ONE ON REQUEST)

● IN ESERCIZIO / IN SERVICE  
■ FUORI ESERCIZIO / OUT OF SERVICE

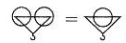


# DIAGRAMMI DI CARICO/LOAD DIAGRAMS

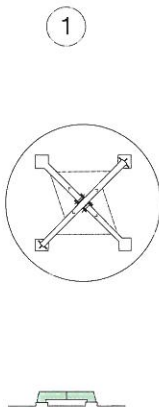
## A 663



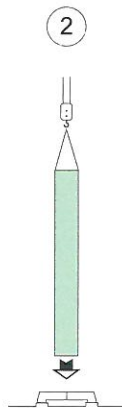
			2,5	2	1,6	1,35	1,2	1	
M	13	15	20	25	30	35	40	46	M 46
T	4	3,4	2,5						
T			2,5	2,1	1,7	1,45	1,2		
M	13,5	17	21	25	30	35	41		M 41
T	4	3,2	2,5						
T			2,5	2,25	1,85	1,5			
M	14,5	18	23	25	30	36			M 36
T	4	3,2	2,5						



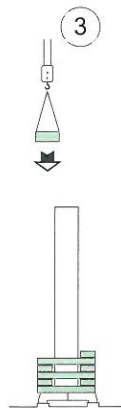
# MONTAGGIO/ERECTION



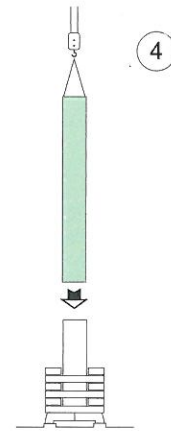
ASSEMBLAGGIO BASAMENTO  
CARRIAGE ASSEMBLY



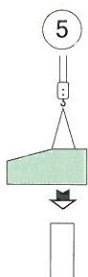
MONTAGGIO PRIMO ELEMENTO  
FIRST MAST SECTION ASSEMBLY



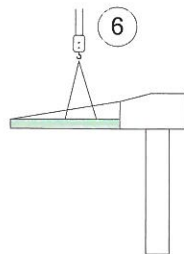
CARICO ZAVORRA  
BALLAST LOADING



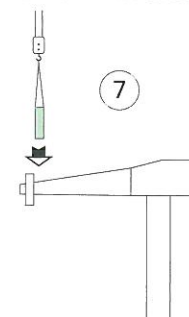
MONTAGGIO EVENTUALI ALTRI ELEMENTI  
EVENTUAL OTHER MAST SECTIONS ASSEMBLY



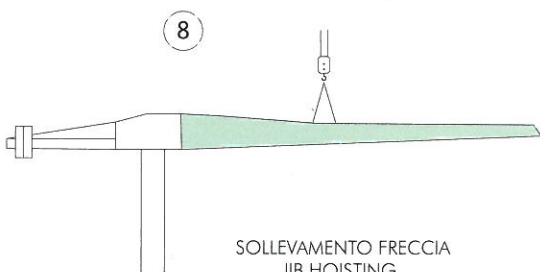
MONTAGGIO ROTAZIONE  
SLEWING GROUP ASSEMBLY



MONTAGGIO CONTROFRECCIA  
COUNTERJIB ASSEMBLY



CARICO PARZIALE CONTRAPPESO  
PARTIAL COUNTERWEIGHT LOADING

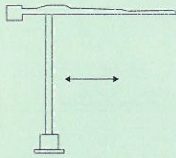
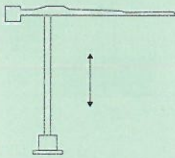
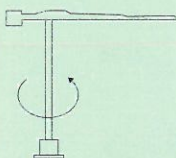
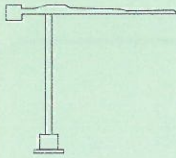


SOLLEVAMENTO FRECCIA  
JIB HOISTING



COMPLETAMENTO CONTRAPPESO  
FINAL COUNTERWEIGHT LOADING

## MECCANISMI/MECHANISMS A 663

	HP	M/1'		HP	M/1'		T	
					I	II	III	
	3/4 (MRC 110)	20/40		15/15/4 (196 - 3VS)	I	5,5	2,5	
	3,5 ♦(SECAS III)	0 ▶ 45 (MICRO 0 - 5)			II	22	2,5	
					III	44	1,25	
					♦	I	2,7	4
					♦	II	11	4
					♦	III	22	2,5
	3,5 (SECAS III)	0 ▶ 0,9 (MICRO 0 - 0,1) (G/1'-REV/1')		15 ♦(MULTILIFT)	0 ▶ 50 4/8/20 40/50		2,5/2,5/2,5 1,25/1	
	2 x 3,5 (SECAS III)	0 ▶ 20 (MICRO 0 - 3)			0 ▶ 25 2/4/10 20/25		4/4/4 2,5/2	

ALIMENTAZIONE/POWER SUPPLY	V	400/50HZ	PROFILO ROTAIA/RAIL SECTION	~KG	46
ASSORBIMENTO/MAINS SUPPLY	KW	25/15 ♦	RADIOCOMANDO/RADIOCONTROL		
CABINA PENSILE/SLEWING CAB			TIRO IN QUARTA/FOUR FALLS REEVING		♦
CONTRAPPESO/COUNTERWEIGHT	~T	13,7	ZAVORRA BASE/BASE BALLAST	~T	18 ▶ 58 ♦

dati non impegnativi e modifiche riservate / subject to modifications

a richiesta / on request ♦

## CARATTERISTICHE PRINCIPALI

STRUTTURE IN ACCIAIO FE 510C A NORME DIN • ACCOPPIAMENTI SPINATI, SEDI ALESATE • PERNERIA, FUNI, PIATTAFORME, SCALE E PASSERELLE AEREE ZINCATE • RUOTISMI SU CUSCINETTI E RIDUTTORI EPICICLOIDALI IN PRESA DIRETTA • RALLA PRECARICATA E TRATTATA TERMICAMENTE, CON LUBRIFICAZIONE CENTRALIZZATA (ALFALUB) • ROTAZIONE ELETTRONICA A REGOLAZIONE CONTINUA DI VELOCITA' (SECAS III) • DISTRIBUZIONE A DUE VELOCITA', O SU RICHIESTA, A REGOLAZIONE CONTINUA DI VELOCITA' (SECAS III) • TRASLAZIONE ELETTRONICA A REGOLAZIONE CONTINUA DI VELOCITA' (SECAS III) • RUOTE DI TRASLAZIONE IN ACCIAIO FUCINATO, TRATTATE TERMICAMENTE • PIATTAFORMA GIREVOLE, CON I PRINCIPALI GRUPPI ELETTROMECCANICI A BORDO • TIRO IN QUARTA • CABINA PENSILE ROTANTE • ARMADIO ELETTRICO IN ACCIAIO INOX A NORME CEI • VERNICIATURA AD IMMERSIONE CON DOPPIA MANO DI SMALTO AL CROMO-ZINCO (DEPAS) • DISPOSITIVI DI SICUREZZA SECONDO LA DIRETTIVA MACCHINE EUROPEA "CE".

## MAIN FEATURES

ST 510C STEEL STRUCTURES CONFORM TO DIN RULES • PINED CONNECTIONS, BORED SEATS • GALVANIZED PINS, ROPES, PLATFORMS, LADDERS AND FOOTPATHES • DRIVING MECHANISMS ON BEARINGS AND DIRECT DRIVE PLANETARY GEARS • PRELOADED AND HEAT TREATED SLEWING RING WITH CENTRALISED LUBRICATION (ALFALUB) • ELECTRONIC SLEWING WITH CONTINUOUS SPEED ADJUSTMENT (SECAS III) • TWO-SPEED TROLLEY WINCH OR, ON REQUEST, WITH CONTINUOUS SPEED ADJUSTMENT (SECAS III) • ELECTRONIC TRAVELLING WITH CONTINUOUS SPEED ADJUSTMENT (SECAS III) • FORGED STEEL TRAVELLING WHEELS HEAT TREATED • SLEWING PLATFORM WITH MAIN ELECTRO-MECHANICAL GROUPS ON BOARD • FOUR FALLS REEVING • SLEWING OPERATOR'S CAB • STAINLESS STEEL ELECTRICAL BOARD PANEL CONFORMS TO CEI RULES • DIPPING PAINTING WITH DOUBLE COAT OF CHROMIUM ZINC ENAMEL (DEPAS) • SAFETY DEVICES ACCORDING TO "CE" EUROPEAN MACHINE DIRECTIVE.



AGENTE/DEALER

ALFA SRL • 61015 NOVAFELTRIA (PU) • ITALY • PH. +39 0541 920096 • FAX 0541 921847  
www.alfagru.it - info@alfagru.it