



# ALFA

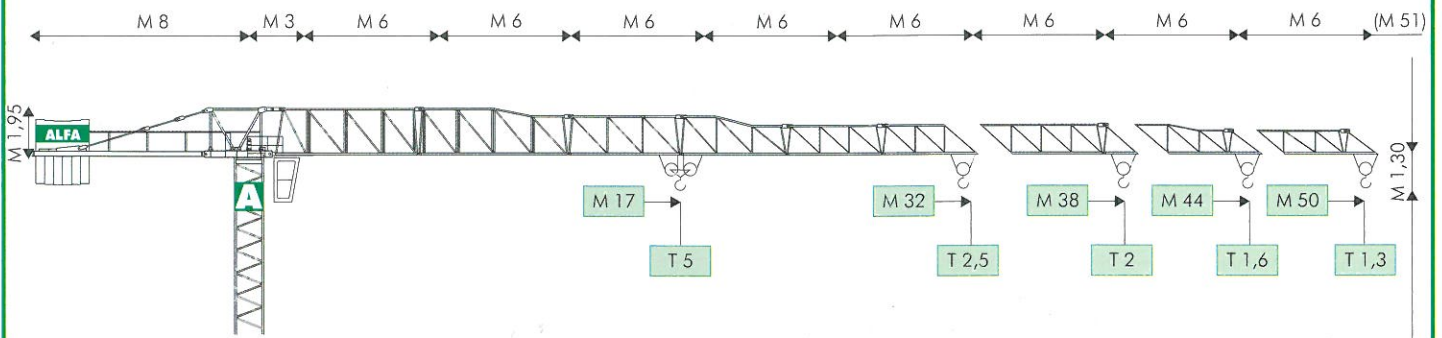
© ALFA

GRUPPO FINALFA



# ® HYDROMATIC A695

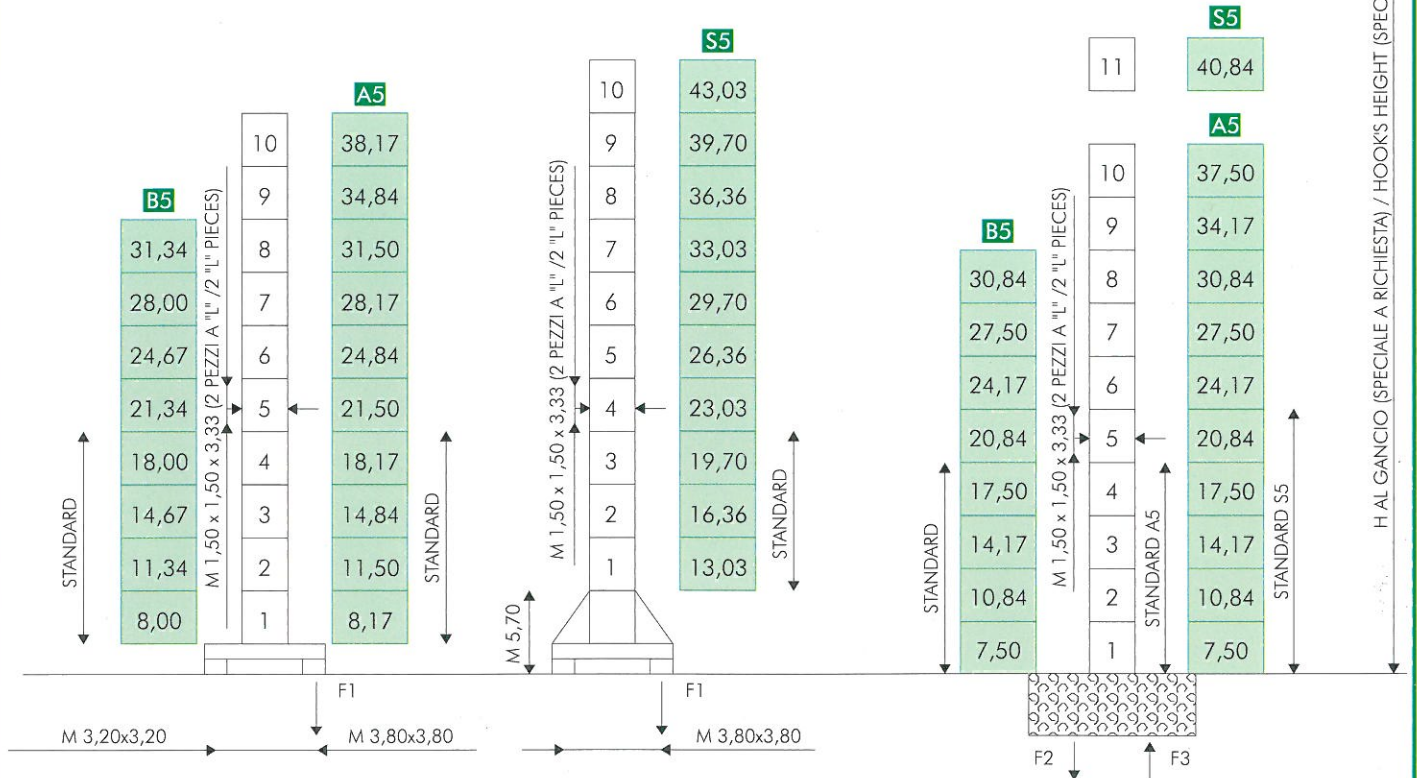
## MODELLO/TYPER A 695 B5 - A5 - S5 - CITY. 5



## COMPOSIZIONE TORRE/TOWER SECTIONS

TRASLANTE (FISSA SU CARRO - M 0,60)  
TRAVELLING (FIXED ON CARRIAGE - M 0,60)

FISSA SENZA CARRO  
FIXED WITHOUT CARRIAGE



● IN ESERCIZIO / IN SERVICE

■ FUORI ESERCIZIO / OUT OF SERVICE

F1 ● T 43 ■ T 45

F1 ● T 49 ■ T 58

F1 ● T 59 ■ T 69

~T 26

~T 29

~T 32

F2 ● T 67 ■ T 94

F3 ● T 51 ■ T 80

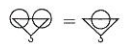
B A S  
~T24 ~T27 ~T30

H AL GANCIO (SPECIALE A RICHIESTA) / HOOKS HEIGHT (SPECIAL ONE ON REQUEST)

# DIAGRAMMI DI CARICO/LOAD DIAGRAMS

## A 695 B5 - A5 - S5 - CITY. 5

T						2,5	2,35	2	1,7	1,45	1,3	
M		15	20	22,5	25	28,5	30	35	40	45	50	M 50
T		5	3,65	3,2	2,9	2,5						
T							2,5	2,1	1,8	1,6		
M		15,5	20	22,5	25	27,5	29,5	35	40	44		M 44
T		5	3,85	3,4	3	2,7	2,5					
T							2,5	2,2	2			
M		16,5	20	22,5	25	27,5	31	35	38			M 38
T		5	4	3,55	3,15	2,85	2,5					
T							2,5					
M		17	20	22,5	25	30	32					M 32
T		5	4,1	3,65	3,25	2,65	2,5					

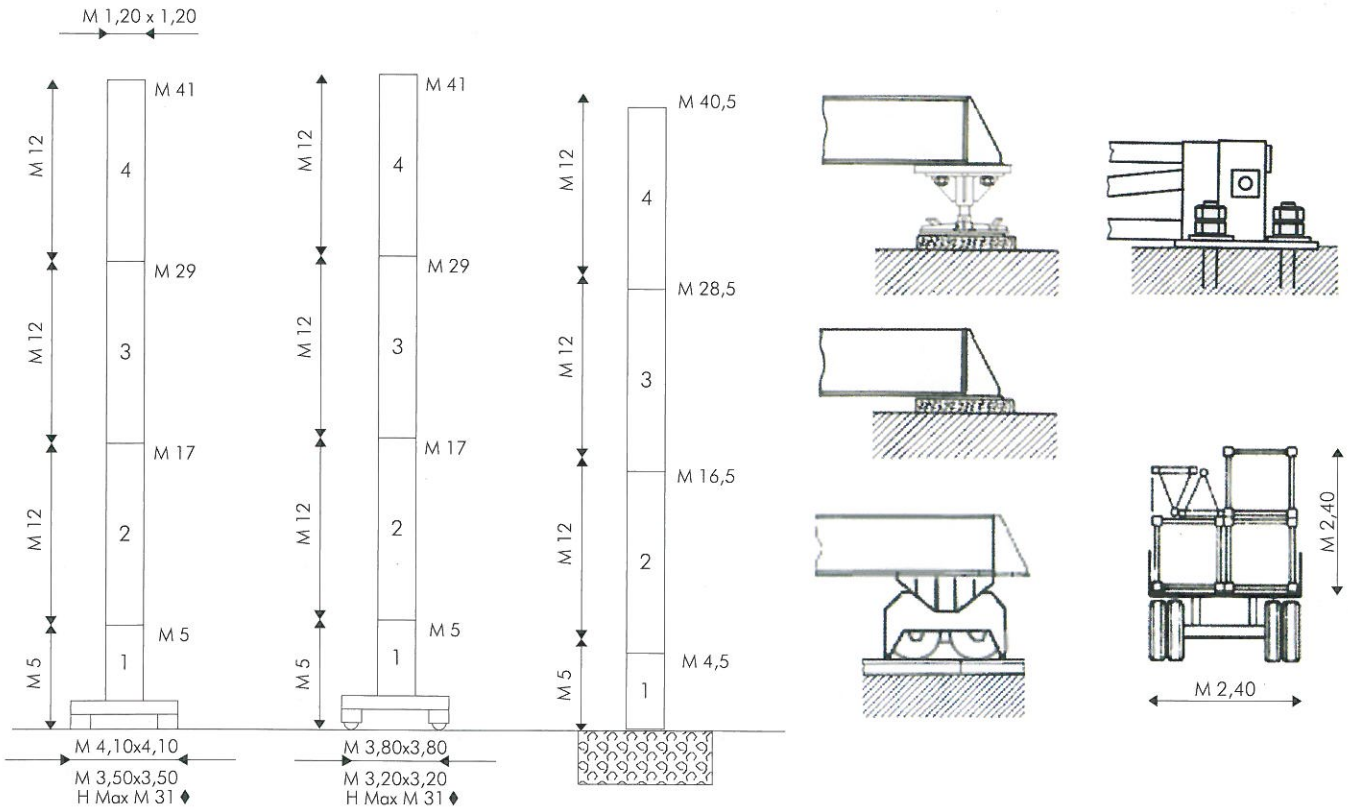


## VERSIONE CITY / CITY CONFIGURATION

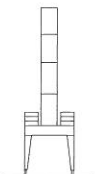
FISSA SU CARRO  
FIXED ON CARRIAGE

TRASLANTE  
TRAVELLING

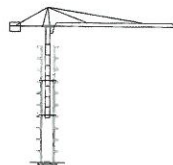
FISSA SENZA CARRO  
FIXED WITHOUT CARRIAGE



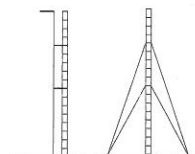
### A PORTALE / PORTAL



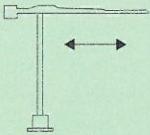
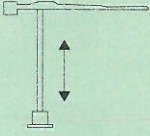
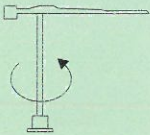
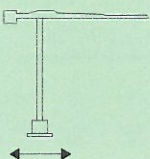
### RAMPANTE / CLIMBING



### ANCORATA / ANCHORED



## MECCANISMI/MECHANISMS A 695 B5 - A5 - S5 - CITY. 5

	HP		M/1'			HP		M/1'		T		
	3/4 (MRC 110)		25/50			15/15/4 (194 - 3VS)	I	5,5	2,5			
							II	22	2,5			
				III			44	1,3				
	3,5 ◆(SECAS III)		0 ▶60 (MICRO 0 - 5)				◆	I	2,7	5		
				II			11	5				
				III		22	2,6					
	5 (SECAS III)		0 ▶0,8 (MICRO 0 - 0,1) (G/1'-REV/1')			◆	0 ▶50 4/8/20 40/50		2,5/2,5/2,5 1,3/1			
	2 x 5,5 (SECAS III)		0 ▶25 (MICRO 0 - 3)			◆	15 (MULTILIFT)		0 ▶25 2/4/10 20/25	5/5/5 2,6/2		

ALIMENTAZIONE/POWER SUPPLY	V	400/50HZ	RADIOCOMANDO/RADIOCONTROL
ASSORBIMENTO/MAINS SUPPLY	KW	25/15◆	SET MONTAGGIO/ERECTION SET ◆
CABINA PENSILE/SLEWING CAB		◆	TIRO IN QUARTA/FOUR FALLS REEVING ◆
CONTRAPPESO/COUNTERWEIGHT	~T	20	ZAVORRA BASE/BASE BALLAST ~T 22▶83 ◆

dati non impegnativi e modifiche riservate / subject to modifications

a richiesta / on request ◆

## CARATTERISTICHE PRINCIPALI

STRUTTURE IN ACCIAIO FE 510C A NORME DIN • ACCOPPIAMENTI SPINATI, SEDI ALESATE • PERNERIA, FUNI, PIATTAFORME, SCALE E PASSERELLE AEREE ZINCATE • RUOTISMI SU CUSCINETTI E RIDUTTORI EPICICLOIDALI IN PRESA DIRETTA • RALLA PRECARICATA E TRATTATA TERMICAMENTE, CON LUBRIFICAZIONE CENTRALIZZATA (ALFALUB) • ROTAZIONE ELETTRONICA A REGOLAZIONE CONTINUA DI VELOCITA' (SECAS III) • DISTRIBUZIONE A DUE VELOCITA', O SU RICHIESTA, A REGOLAZIONE CONTINUA DI VELOCITA' (SECAS III) • TRASLAZIONE ELETTRONICA A REGOLAZIONE CONTINUA DI VELOCITA' (SECAS III) • RUOTE DI TRASLAZIONE IN ACCIAIO FUCINATO, TRATTATE TERMICAMENTE • PIATTAFORMA GIREVOLE, CON I PRINCIPALI GRUPPI ELETTROMECCANICI A BORDO • TIRO IN QUARTA • CABINA PENSILE ROTANTE • ARMADIO ELETTRICO IN ACCIAIO INOX A NORME CEI • VERNICIATURA AD IMMERSIONE CON DOPPIA MANO DI SMALTO AL CROMO-ZINCO (DEPAS) • DISPOSITIVI DI SICUREZZA SECONDO LA DIRETTIVA MACCHINE EUROPEA "CE".

## MAIN FEATURES

ST 510C STEEL STRUCTURES CONFORM TO DIN RULES • PINED CONNECTIONS, BORED SEATS • GALVANIZED PINS, ROPES, PLATFORMS, LADDERS AND FOOTPATHES • DRIVING MECHANISMS ON BEARINGS AND DIRECT DRIVE PLANETARY GEARS • PRELOADED AND HEAT TREATED SLEWING RING WITH CENTRALISED LUBRICATION (ALFALUB) • ELECTRONIC SLEWING WITH CONTINUOUS SPEED ADJUSTMENT (SECAS III) • TWO-SPEED TROLLEY WINCH OR, ON REQUEST, WITH CONTINUOUS SPEED ADJUSTMENT (SECAS III) • ELECTRONIC TRAVELLING WITH CONTINUOUS SPEED ADJUSTMENT (SECAS III) • FORGED STEEL TRAVELLING WHEELS HEAT TREATED • SLEWING PLATFORM WITH MAIN ELECTRO-MECHANICAL GROUPS ON BOARD • FOUR FALLS REEVING • SLEWING OPERATOR'S CAB • STAINLESS STEEL ELECTRICAL BOARD PANEL CONFORMS TO CEI RULES • DIPPING PAINTING WITH DOUBLE COAT OF CHROMIUM ZINC ENAMEL (DEPAS) • SAFETY DEVICES ACCORDING TO "CE" EUROPEAN MACHINE DIRECTIVE.



AGENTE/DEALER

ALFA SRL • 61015 NOVAFELTRIA (PU) • ITALY • PH. +39 0541 920096 • FAX 0541 921847

www.alfagru.it - info@alfagru.it